

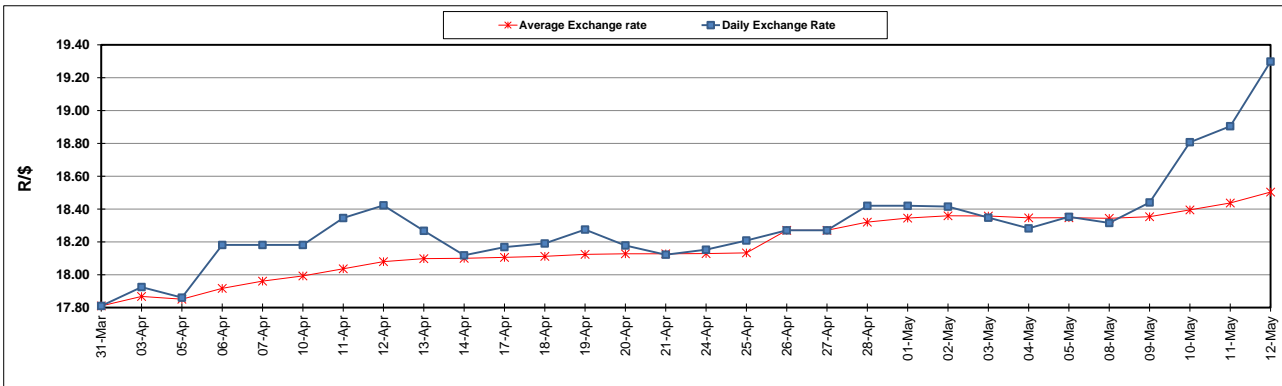
South African Cents per Litre (SA c/l)	PETROL 95 ULP	PETROL 93 ULP & LRP	DIESEL 0.05%	DIESEL 0.005%	ILL. PAR.
GAUTENG PUMP PRICE AS FROM 03/05/2023	2,334.000	2,301.000	-	-	-
WHOLESALE PRICE AS FROM 03/05/2023	-	-	2,015.290	2,049.690	1,439.058
SINGLE NATIONAL MAXIMUM RETAIL PRICE	-	-	-	-	1,859.000
BASIC FUEL PRICE - 12/05/2023	1,223.620	1,187.745	1,159.712	1,191.763	1,201.563
PRESS RELEASE CONTRIBUTION TO BFP 03/05/2023 - 12/05/2023	1,295.970	1,262.970	1,205.630	1,240.030	1,206.128
UNIT OVER/(UNDER) RECOVERY - 12/05/2023	72.350	75.225	45.918	48.267	4.565
AVERAGE BASIC FUEL PRICE 26/04/2023 - 12/05/2023	1,161.134	1,129.761	1,085.108	1,118.903	1,134.961
AVERAGE UNIT OVER/(UNDER) RECOVERY 26/04/2023 - 12/05/2023	114.628	113.001	142.830	133.435	83.859

ANALYSIS MOVEMENT OF AVERAGE OVER/(UNDER) RECOVERY

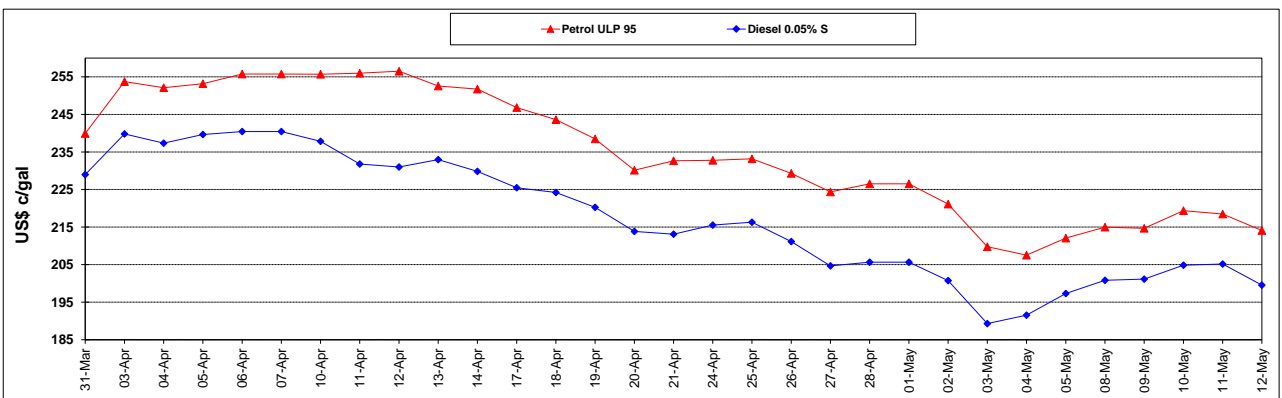
	PETROL 95	PETROL 93	DIESEL 0.05%	DIESEL 0.005%	ILL. PAR.
- MOVEMENT IN INTERNATIONAL PRODUCT PRICES	137.859	135.604	164.540	155.821	106.566
- MOVEMENT IN EXCHANGE RATE	(23.231)	(22.603)	(21.710)	(22.386)	(22.707)
AVERAGE UNIT OVER/(UNDER) RECOVERY 26/04/2023 - 12/05/2023	114.628	113.001	142.830	133.435	83.859

R/\$ EXCHANGE RATE - (R/\$19.2980 - 12/05/2023)

EXCHANGE RATE USED IN BASIC FUEL PRICE



INTERNATIONAL PRODUCT PRICES OF BASKET USED IN BASIC FUEL PRICE



BASIC FUEL PRICE IN SA CENTS PER LITRE

